



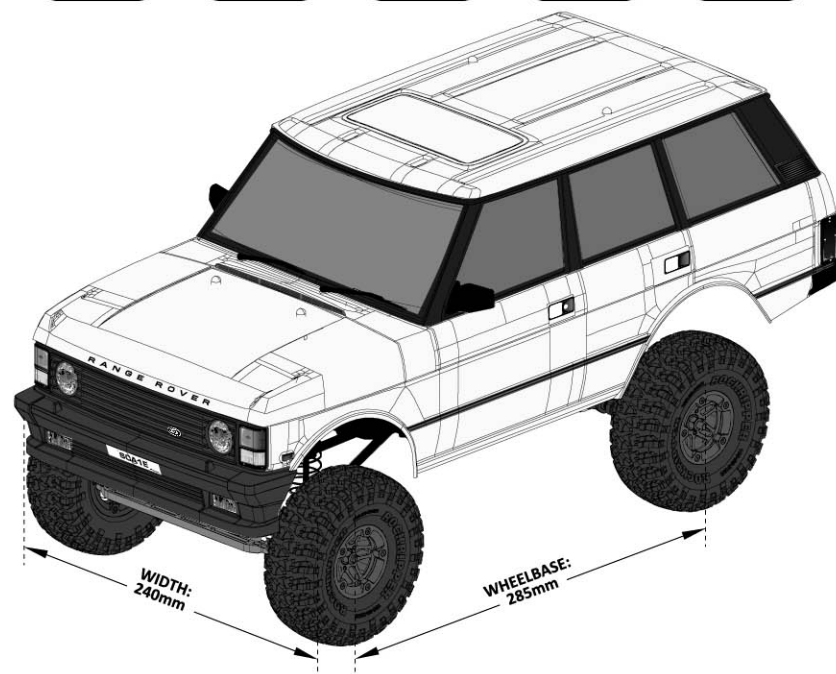
**RANGE ROVER
USER MANUAL & SETUP GUIDE**

用户手册和设置指南

MANUALE D'USO E DI MONTAGGIO

Bedienungs - und Bauanleitung

Manuel de l'utilisateur et guide de réglages



Visit us on www.carisma-shop.com

請到: www.carisma-shop.com

Visitateci su www.carisma-shop.com

Besuchen sie uns auf www.carisma-shop.com

Visitez notre site www.carisma-shop.com

©2018 Carisma. All Rights Reserved. Product specifications are subject to change. Some models shown are prototypes which may vary slightly from what is inside.

©2018 Carisma. Tutti i diritti riservati. Le caratteristiche del prodotto sono soggette a modifiche. Alcuni prodotti mostrati sono prototipi e possono differire leggermente da quanto fornito.

©2018 Carisma. Alle Rechte vorbehalten. Die Eigenschaften der Produkte können Änderungen unterliegen. Einige dargestellte Produkte sind Prototypen und können leicht von dem Inhalt unterscheiden.

©2018 Carisma. Tous droits réservés. Les spécifications du produit peuvent changer. Certains modèles présentés sont des prototypes qui peuvent être légèrement différents du modèle commercialisé.

Printed in China
中国印刷
Stampato in Cina
Gedruckt in China
Imprimé en Chine



MAN-G00726

Land Rover and the Land Rover Logo are trademarks owned and licensed by Jaguar Land Rover Limited. And Trade Dress used under license to Mun Ah Plastic Electronic Toys Co. Ltd.

Trail Start



Welcome to the world of Carisma SCA-1E Adventure. This is just the starting point on a journey that for many will undoubtedly last a lifetime. Where it eventually leads you to is your own choice. The first step was simply opening the box, the next will be entirely up to you.

Find that perfect location, drive from point A to point B, soaking in the scenery along the way and truly becoming one with your environment. The World is so diverse, it's terrain varied and challenging, but the SCA-1E offers the perfect Travelling Companion to embracing it all, head on...

The rig offers tried and trusted Off Road features like a Solid Axle, 4WD Driveline, a centrally located Transmission and Motor, True 4-Link Suspension, Adjustable Coil Over, Oil Filled Shocks, and Soft Compound, Thickly Treaded Scale Tyres. The electrics Splash proof, the Steering Servo High Torque and 2.4GHz Radio System, safe and Interference Free.

The bodysell can be left completely stock or personalised to your own level of additional detail. You can alter the weight bias and how the rig physically drives by adjusting the main packs location, or adding Wheel Weights. Improve its extreme abilities by adding a Remote Winch to the front bumper and to aid Night Running, optional LED lights. The Electronic Speed Control is set into Crawler Mode as standard, offering instant reverse and an always on Drag Brakes. This improves the rigs ability to descend steep inclines under compete Electronic Descent Control.

Look at the SCA-1E as a blank sheet of paper. You decide its future feature set and abilities, and in turn it will help shape your own personal destiny. Thank you for becoming another member of the fast-growing Global Scale Community, and Carisma RC Family. We hope that you enjoy every aspect of the journey.

Life is short, so truly live it, one **#CarismaScaleAdventure** at a time!



SAFETY PRECAUTIONS

Thank you for your purchase of the Carisma SCA-1E Rig. With proper use and regular, basic maintenance, this rig will provide you and all those who drive it hours of reliable RC fun! Please read this manual to fully understand its features, capabilities, and the best operation of the product. Should you have a technical question or need replacement parts, please contact your local Carisma RC dealer, original place of purchase or our dedicated web Shop: <http://www.carisma-shop.com>. You may also contact us direct via e-mail at: webmaster@carisma-shop.com

WARNING

Read the **ENTIRE** instruction manual to become familiar with the features of this product before operating. This is a sophisticated hobby grade product. It must be operated with caution and common sense. It will require some basic mechanical ability. Failure to operate this product in a safe and responsible manner could result in injury or damage to the product, persons, or other property. This product is not intended for use by children without direct adult supervision. Do not use with incompatible components or alter this product in any way outside of the instructions provided by Carisma RC. This manual contains instructions for safe operation and maintenance. It is essential to read and follow all the instructions and warnings in the manual, prior to assembly, setup, or use. If you are not prepared to accept these condition, please return this product immediately to place of purchase.

CAUTION:

This product is intended for ages 14+ Users under 18 years of age require parental supervision.

Do not expose any battery or component to open flame or other source of high temperature.

You must read the enclosed instruction manual completely prior to using this product.

Do not use any charger except the one included to charge the battery.

Never leave a battery unattended during charging.

Do not expose any components to moisture.

Always avoid water exposure to all equipment that's not specifically designed and protected for this purpose.

As the end user of this product, you are solely responsible for operating in a manner that does not endanger yourself and others, or result in damage to the product, or property of others.

Always carefully follow the directions and warnings for this, and any optional equipment (chargers, etc.).

This model is controlled by a radio signal subject to interference from many sources outside your control.

Never place any portion of the vehicle in your mouth as it could cause serious injury or even death.

Always operate your vehicle in open space away from full-size vehicles, traffic, people, and animals.

Always keep a safe distance in all directions around your model to avoid collisions or injury.

Always keep all chemicals, small parts, and anything electrical out of the reach of children.

Always keep transmitter powered on while your vehicle is power on.

Always remove batteries after use or before disassembly.

Never operate your vehicle with low transmitter batteries.

Always keep your vehicle in sight and under control.

Never operate your vehicle with damaged wiring.

Always let parts cool after use before touching.

Always keep moving parts clean and dry.

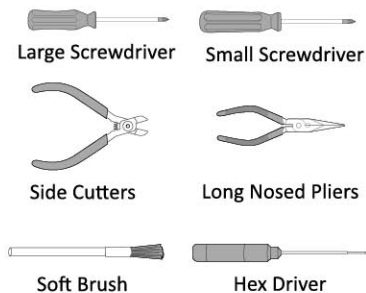
Always use fully charged batteries.



WHAT'S IN THE BOX



TOOLS RECOMMENDED (NOT INCLUDED)



ABOUT THE RADIO SYSTEM

CTX-8000 2.4GHZ FHSS TECHNOLOGY SYSTEM

The following is an overview of the various functions and adjustments found on CTX-8000 radio system. It is important to read and understand these functions and adjustments before driving your Crawler.

TRANSMITTER FUNCTIONS:

Steering Wheel: Controls the turning direction of the Crawler (left/right).

Throttle Trigger: Controls the speed and direction of movement (forward/brake/reverse) of the Crawler.

On/Off Switch: Powers the transmitter on and off.

FTN Key: Used to synchronize the connection between the transmitter and receiver. May also serve as an additional function on different models.

LED Indicator: Glows green or red to indicate low battery power, synchronizing in progress, setting endpoints, and normal operation.

ATV: Adjust the maximum steering throw in both directions when turning the Crawler left of right.

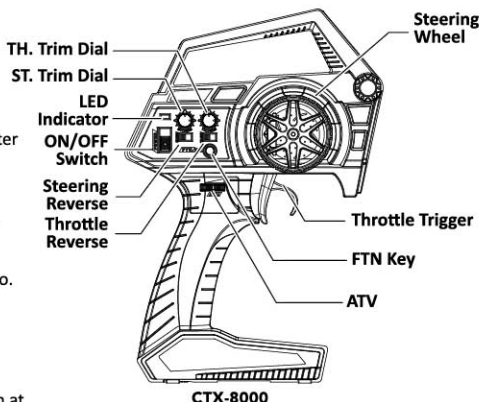
ST. Trim: Adjusts the neutral (centered) position of the steering servo.

TH. Trim: Adjusts throttle neutral position.

Steering Reverse: Reverses the L/R direction when operating the steering wheel.

Throttle Reverse: Reverses the forward/reverse direction when operating throttle.

Usually, drivers will experience understeer when making a wide turn at high speed or oversteer when attempting sharp turns at high speed (easy to spin out). Drivers should practice a smooth application of both steering and throttle for various cornering speeds and road surfaces.



BATTERY INSTALLATION

1. Remove the battery compartment cover as shown.
2. Install the batteries observing the correct polarity as marked on the battery compartment.
3. Reinstall the battery compartment cover as pictured.

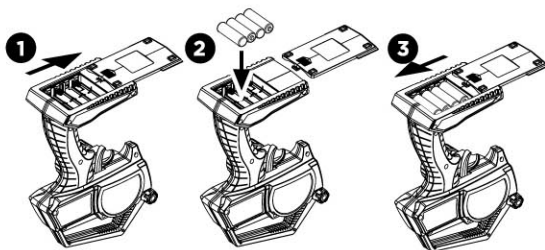
Warning:

Never disassemble alkaline batteries or place batteries in fire or near chemical agents, as personal injury or property damage can occur.

Battery Disposal:

Observe local environmental regulations regarding disposal of expired batteries.

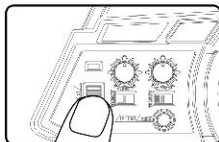
1. After use, dispose old batteries in designated areas far away from any water supply, household areas and plants.
2. Submit the used batteries to specified battery recycling stations. Visit www.cal2recycle.org for directions to battery recycling centers near you.



BATTERY LED INDICATOR

The Green LED indicator located on the front left side of the transmitter provides a visual status of battery condition. The green LED will illuminate solid, indicating that the batteries have sufficient power. When batteries voltage drops below 4 volts, LED will flash red, indicating the batteries are low and should be replaced.

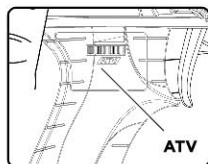
- Solid GREEN:** Sufficient Power supply
- Flashing RED:** Time to replace batteries



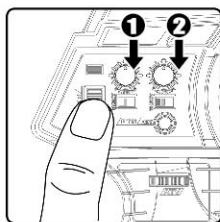
ATV

ATV (adjustable travel volume) allows the driver to adjust the maximum steering angle in both directions.

Experiment to find the ideal setting for your vehicle based on the running surface and personal preference.



BEFORE DRIVING YOUR CRAWLER



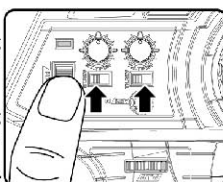
1. Steering: Adjust the steering trim so that the Crawler goes in a straight line without needing to touch the steering wheel.
2. Throttle: Adjust the throttle trim so that the vehicle remains at rest (not moving) when the throttle trigger is in the neutral position.

SERVO REVERSING

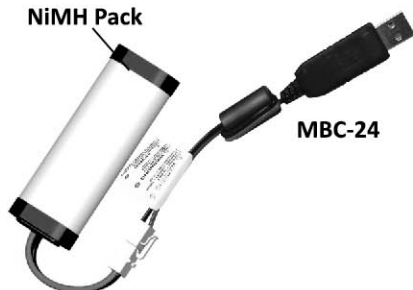
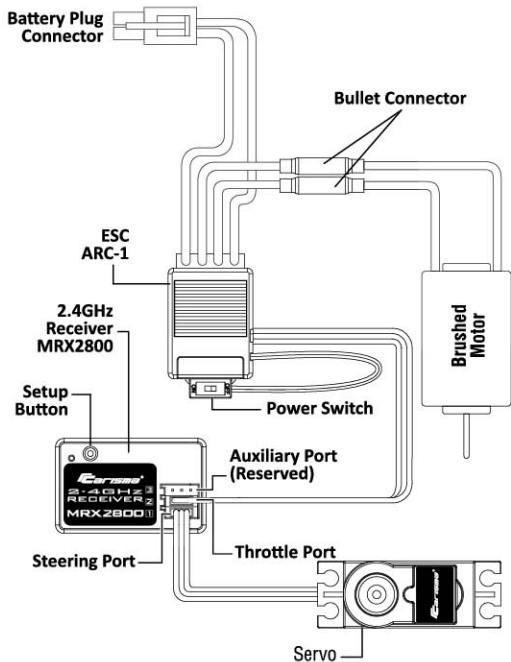
Use this feature to change the direction of steering wheel and throttle trigger.

Steering Reverse: Reverses the response direction when operating steering wheel. Right becomes left and vice versa.

Throttle Reverse: Reverses the response direction when operating throttle trigger. Pulling the throttle trigger becomes reverse and pushing the trigger is now forward.



SCA-1E Electrics



MBC-24 USB Charging

The SCA-1E comes supplied with a USB Trickle Charger. The MBC-24 is designed to charge a 7.2V NiMH battery ONLY. Note: DO NOT CHARGE ANY OTHER TYPE OF BATTERY. It is NOT intended for LiPo or Li-ion packs.

When connected to a standard USB power source, a red LED will light up indicating that the power is ON. The trickle output current is 100mA, and has a safe charging time for a fully drained battery to fully charged of about 14 hours. After charging, disconnect the USB charger, the battery should feel slightly warm. Part charged packs will peak much faster, so if the battery becomes warm early on in charge cycle, please disconnect the USB Charger and run until fully discharged. It is always best to fully discharge and cycle NiMH packs. It may take a few cycles for your pack to reach its full potential.

Note: Always charge the battery under supervision and do not leave the charging battery unattended. The red LED will NOT turn off, it only indicates power is present to charger.

Programming Procedure:

Since this ESC is without setup key, so it use Throttle as Key to interact with the ESC.

- For safety, suggest to remove the motor pinion during ESC setting.
- Turn off ESC, Keep hold the Throttle TH at Max forward and then power on the ESC.
- Keep holding (approx 5 sec) the TH at Max forward until beep once and both LED flashing, then release TH to Neutral position
- Now, ESC at "Selecting Item to Edit", ESC will repeating show the follow pattern with sound one by one:

A. Battery Type Selection	Green LED only	(beep once)
B. End points calibration	Red LED only	(beep 2 times)
C. ESC Mode Selection	Red + Green LED	(beep 3 times)

To Select which item to edit, simply pull the trigger after the corresponding "beep" indicator

Battery Type Selection

1. LED indicates Current Battery Type
 - Red = LiPo (beep once)
 - Green = NiMH (beep 2 times)
2. Pull Throttle to max to change it, and LED indicator will be updated immediately with beep.
3. If no throttle action over 4 second, programming will be ended:
 - both LED flashed 4 times with 4 beep, finally all LED turn off
 - User need to power off and turn on again to return to normal operation

ESC Mode Selection

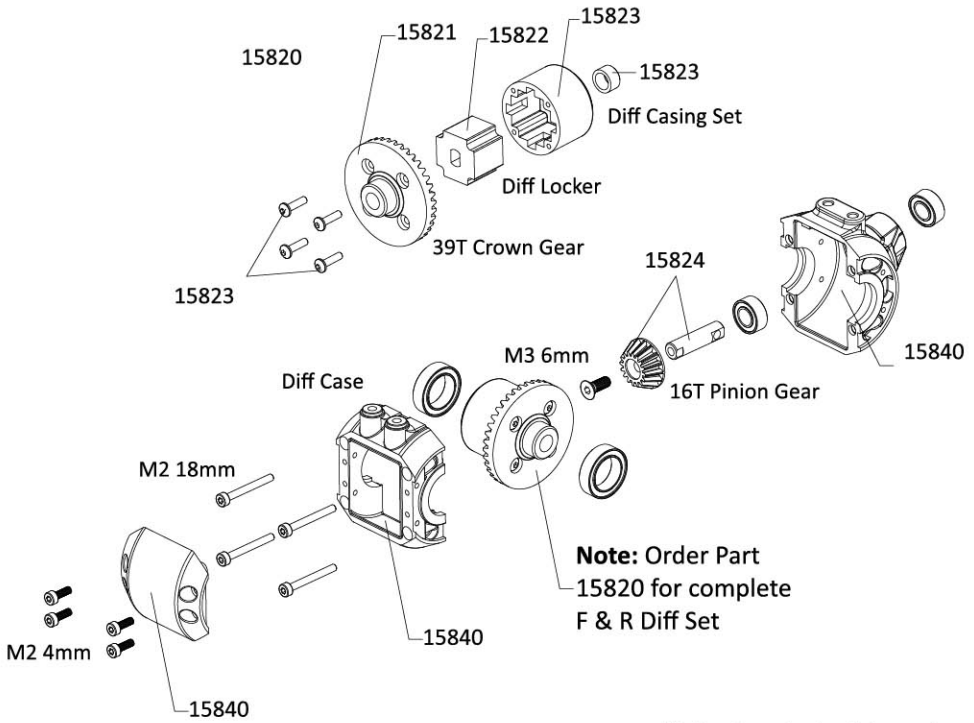
1. LED indicate Current ESC Mode:

- Green LED Only	Forward / Reverse with Smart Brake	(beep once)
- Green LED Flashing quickly	Forward only	(beep 2 times)
- Green LED Flashing slowly	Beginner Mode	(beep 3 times)
- Red and Green LED	Crawler mode	(beep 4 times)
2. Pull TH to Max Forward to update ESC Mode
3. If no throttle action over 4 seconds, programming will be ended:
 - both LED flash 4 times with 4 beep, finally all LED turn off
 - User need to power off and turn on again to return to normal operation

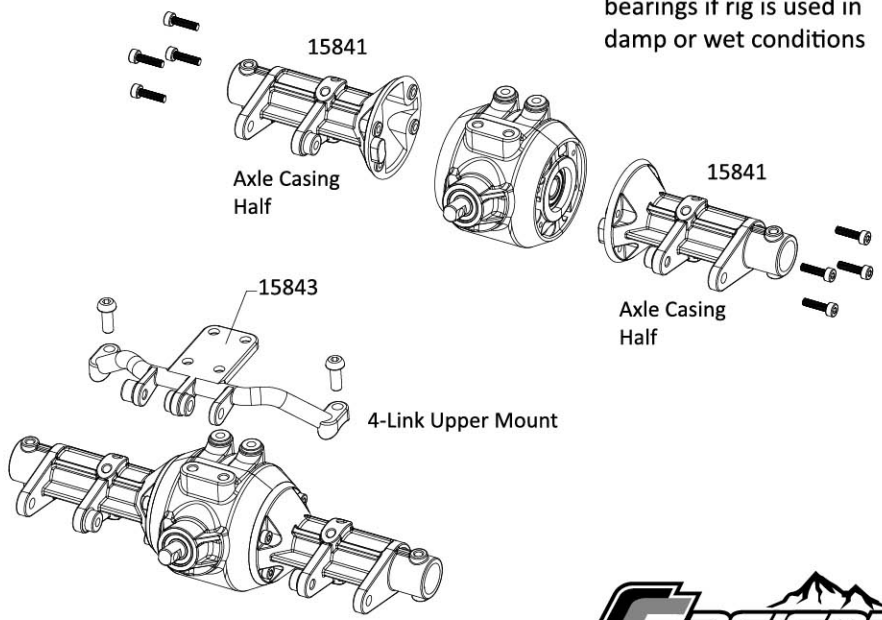
End points Calibration

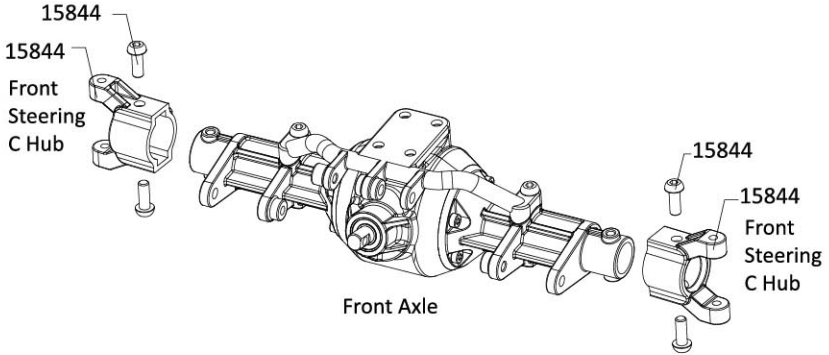
1. Just after entered End-points Calibration, the ESC keep flashing green LED to indicate waiting for TH return to Neutral position. Once Neutral position is detected, green LED solid on for 1 sec with beep once,
2. Now keep flashing Red LED to indicate waiting for TH at Max Forward, When Max Forward is detected. Red LED solid on for 1 sec with beep once,
3. ESC keep flashing Green LED with Red LED solid on, once Max Reverse position detected, Green LED solid on for 1 sec and beep once.
4. Now, programming is done, it shows both LED flashing 4 times with 4 beep, finally all LED turn off
5. User need to power off and turn on again to return to normal operation



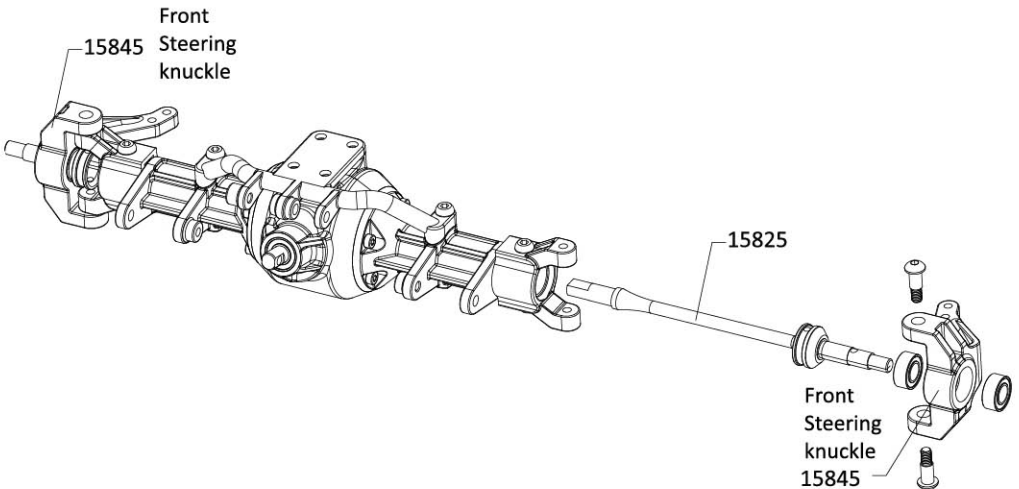
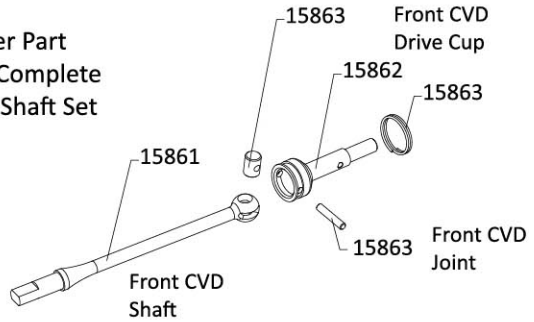


Note: Regularly strip and re-lube axles and bearings if rig is used in damp or wet conditions

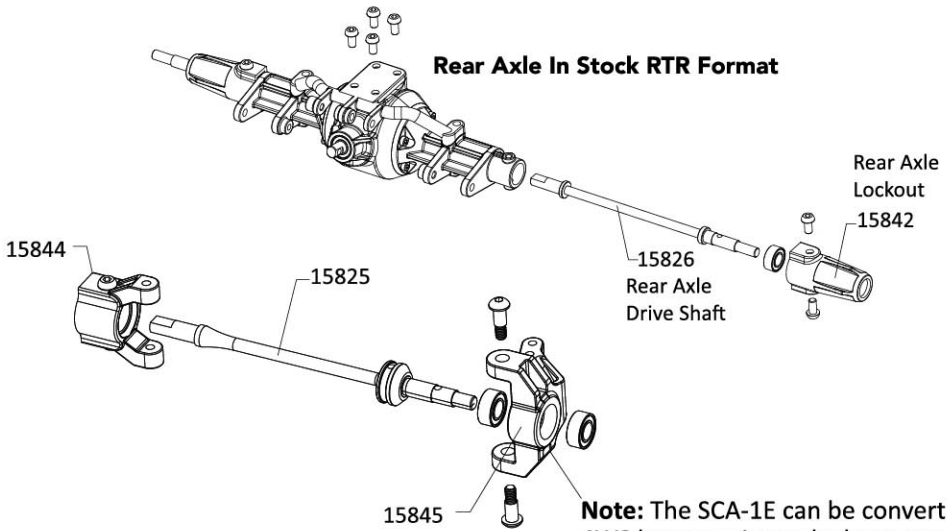




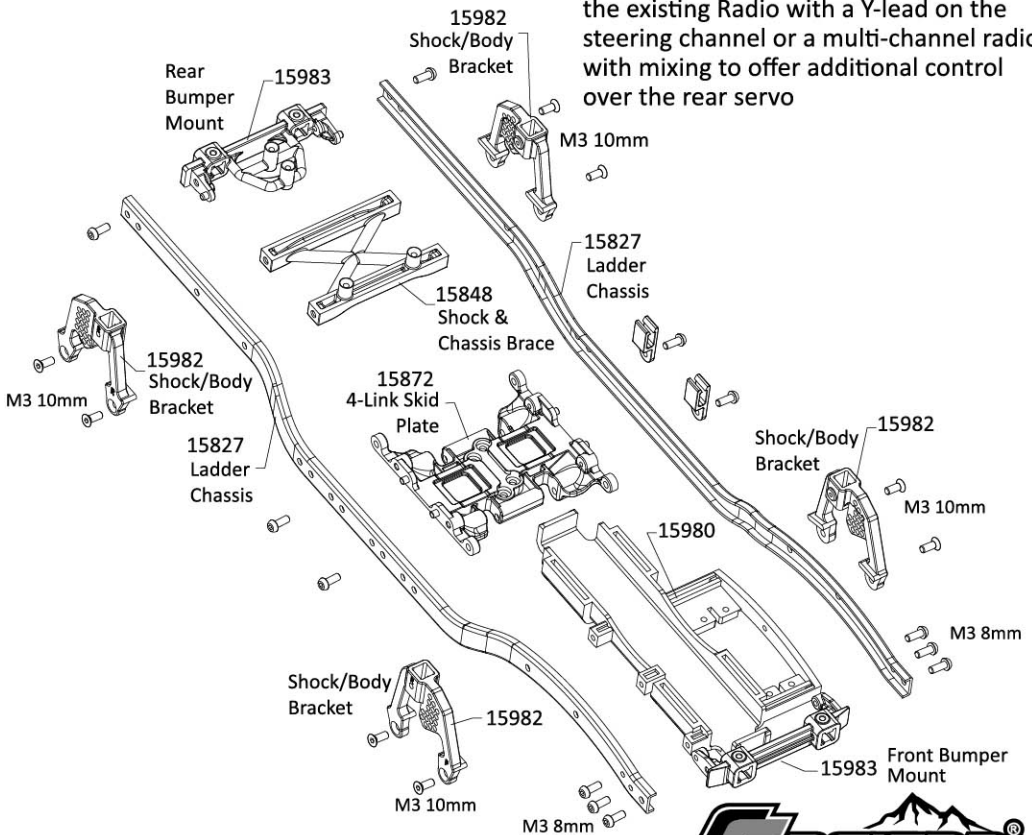
Note: Order Part
15825 for Complete
Front CVD Shaft Set

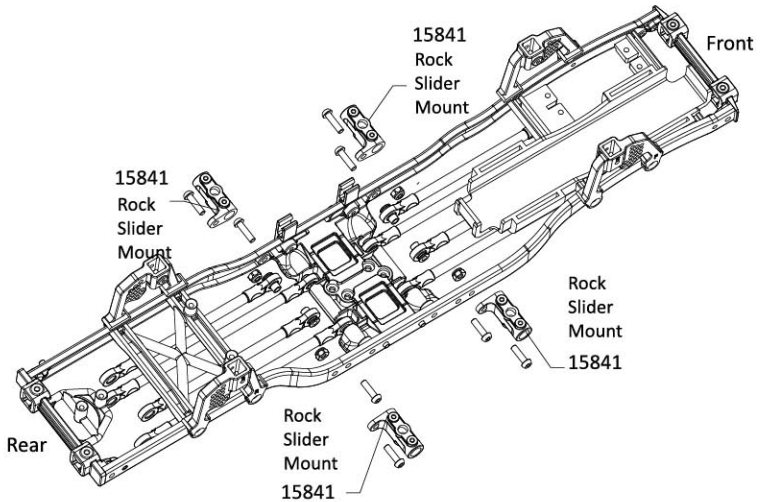
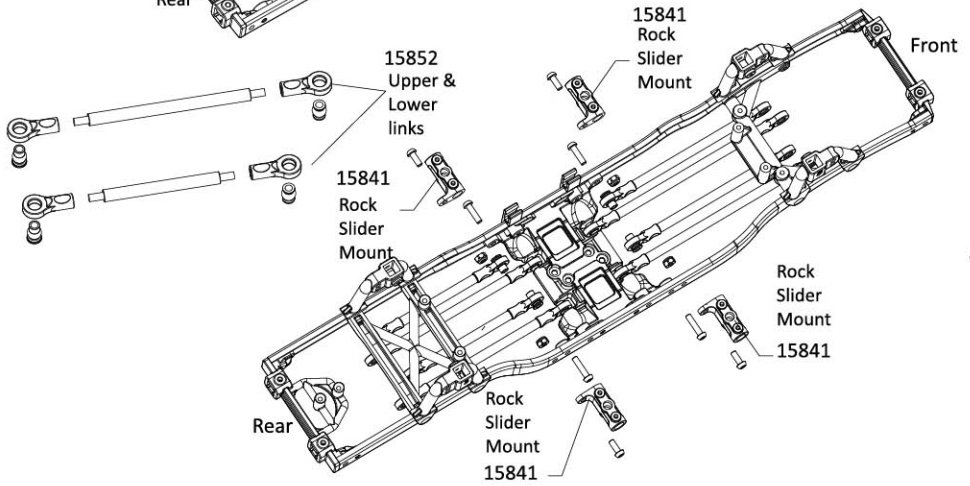
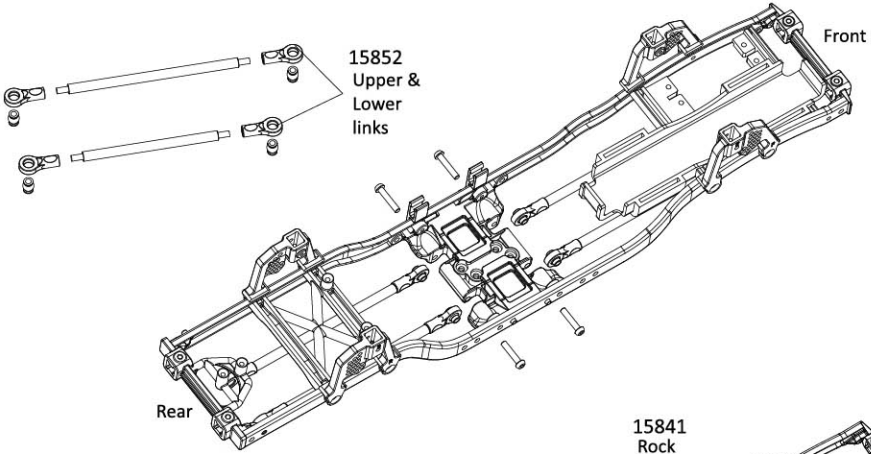


Rear Axle In Stock RTR Format

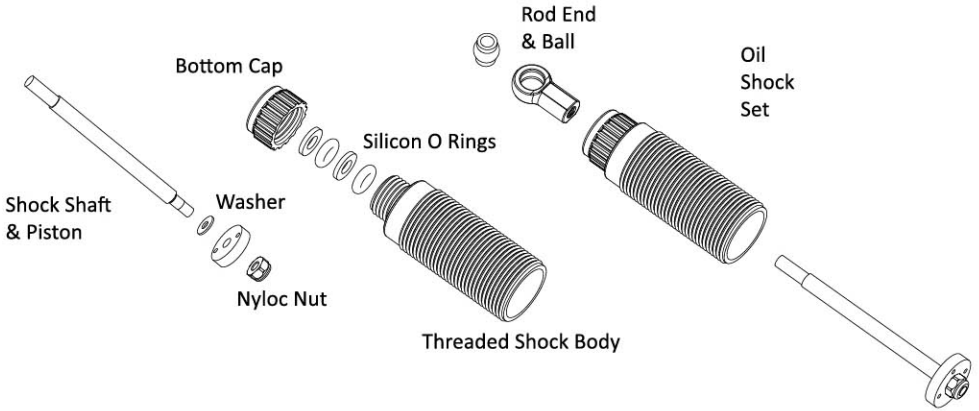


Note: The SCA-1E can be converted to 4WS by removing the lockouts and adding the same steering components and servo mount as the front axle. Then use the existing Radio with a Y-lead on the steering channel or a multi-channel radio with mixing to offer additional control over the rear servo



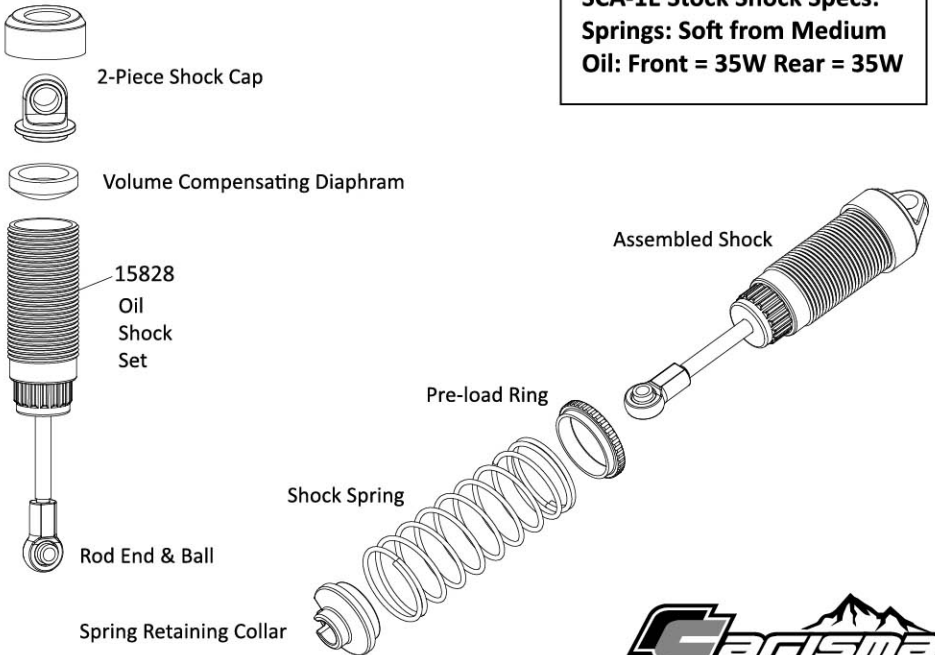


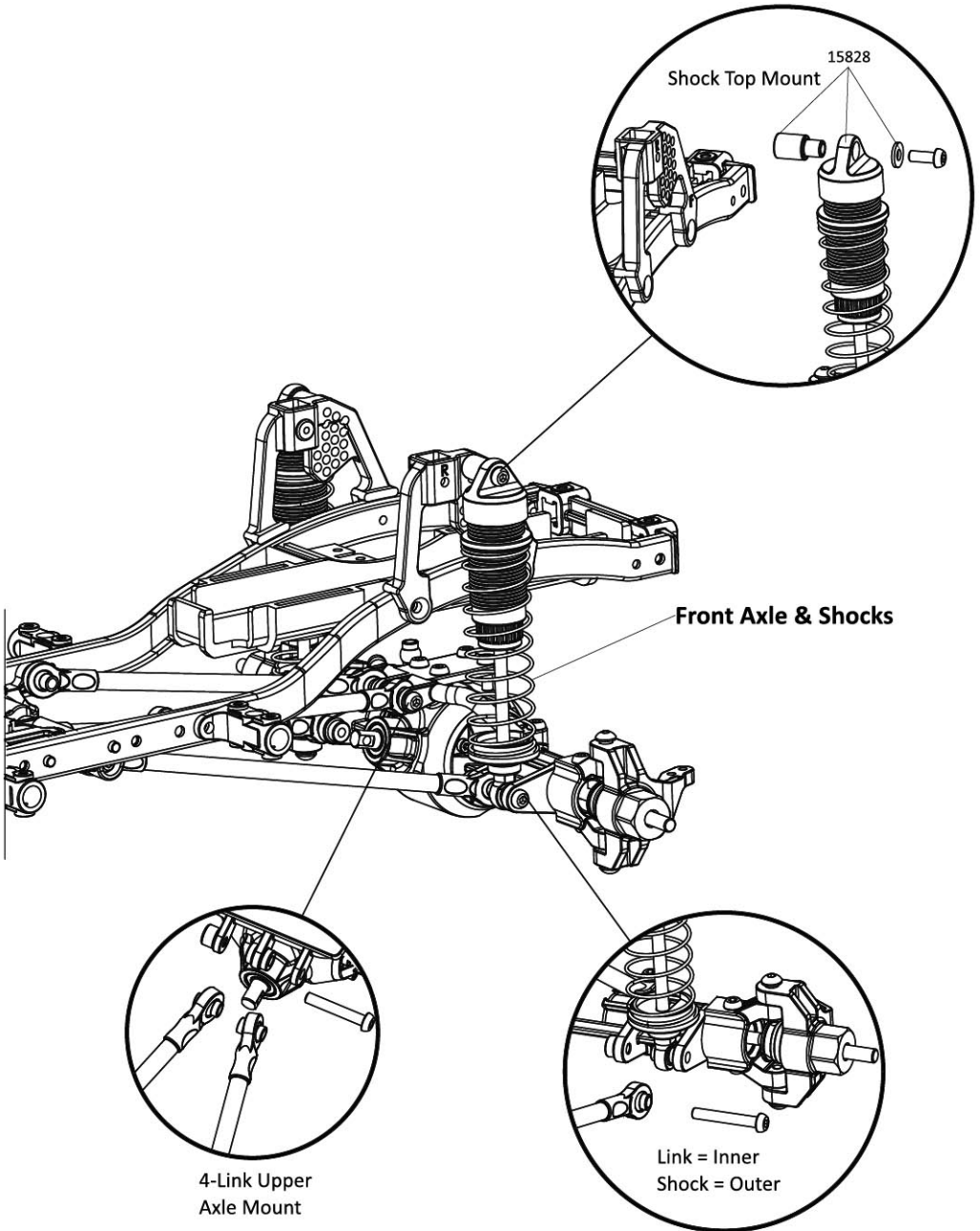
SCA-1E Shocks



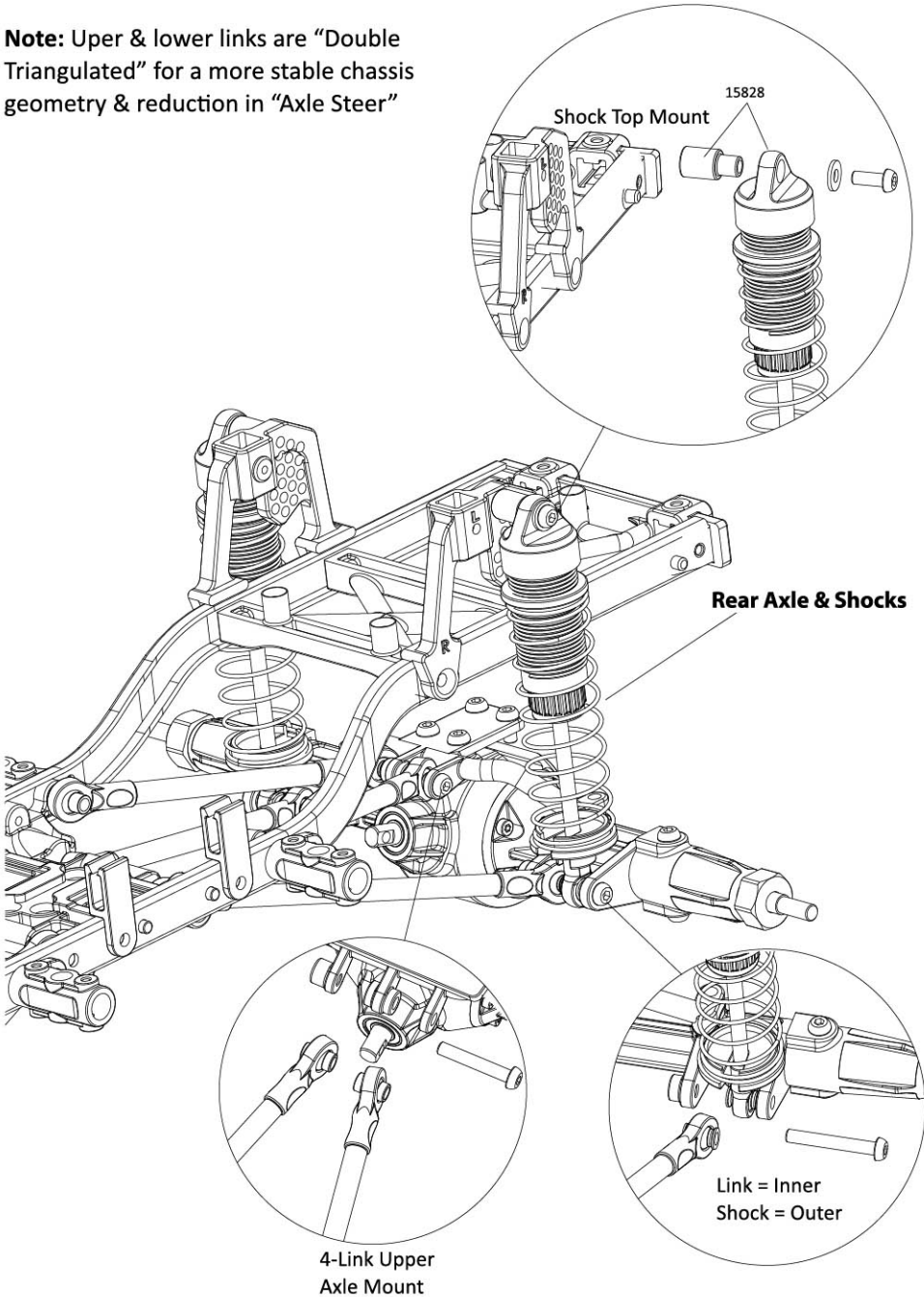
Note: Shock oil and spring choice affects the driving characteristics of your rig. The thicker the oil is, the slower the shock piston moves inside the shock body and the slower the rig can react to differences in your chosen running surface. Too thin and the rig can become unpredictable when crawling and suffer from excessive Torque Twist. This is a phenomenon where the torque of the driveline is transferred through the axles and shocks on one or more corners of the rig compress to compensate. All solid axle rigs suffer from this to some extent, but with the right oil, spings and pre-load applied to the shock/shocks that compress, this can be vastly improved.

SCA-1E Stock Shock Specs:
Springs: Soft from Medium
Oil: Front = 35W Rear = 35W



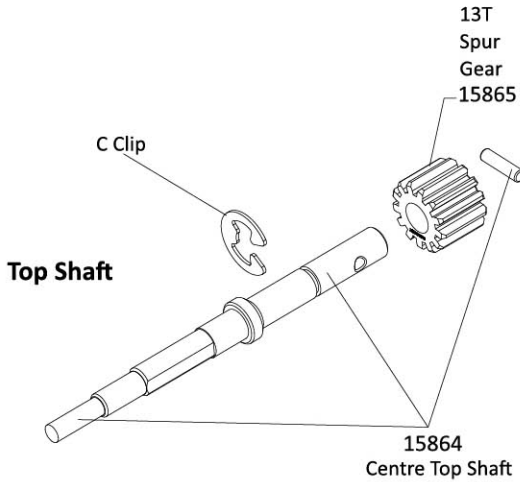


Note: Uper & lower links are “Double Triangulated” for a more stable chassis geometry & reduction in “Axle Steer”

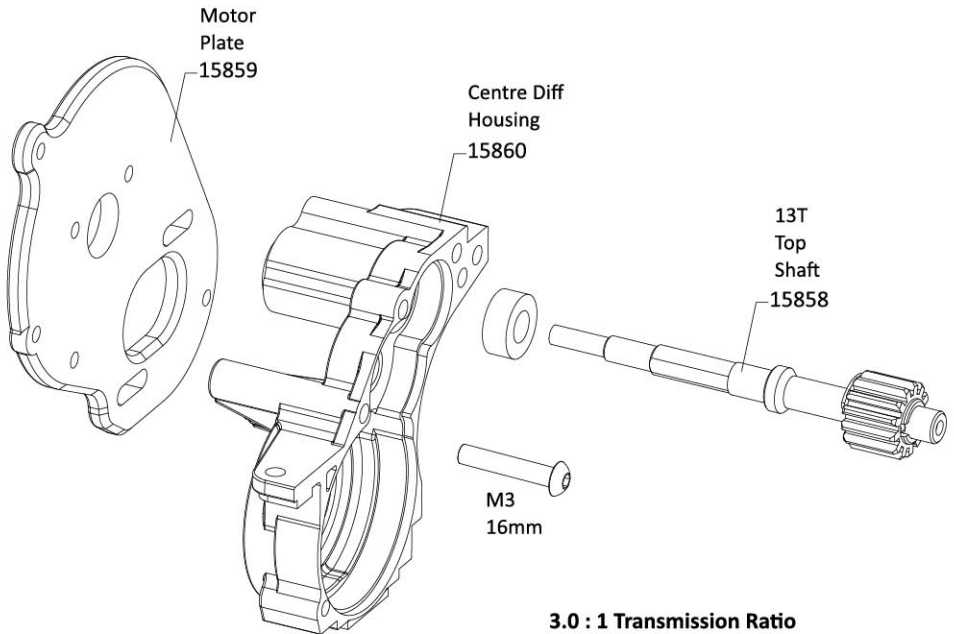


Note: Axle Steer is when an axle (front or rear) moves in a front to back arc as it articulates, making the rig crab. The end result being innacurate & unpredictable handling.

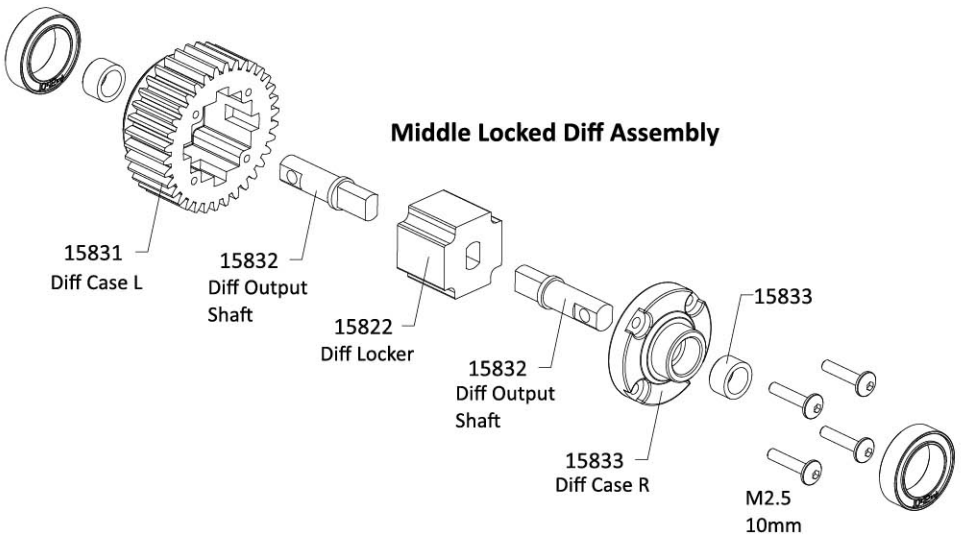




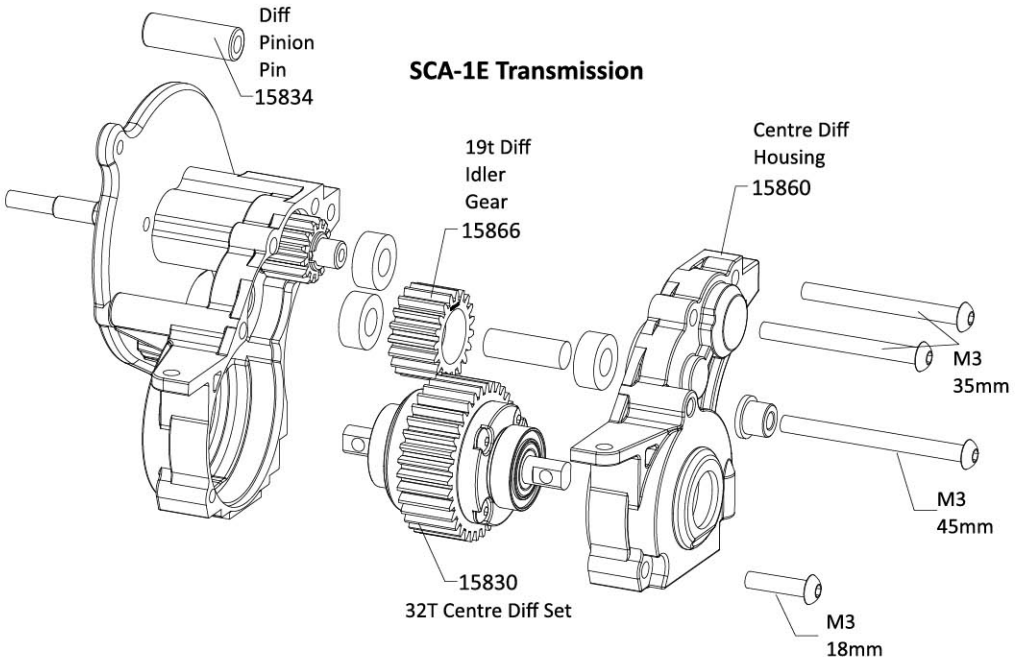
Note: With the stock 17T Pinion and 83T Spur gear the final drive ratio of the transmission is 15:1. This means that for every fifteen turns of the Motor, the Transmissions outrives turn just once. This offers the locked axles (and in turn the wheels and tyres) a lower wheel speed and lots of crawling Torque.



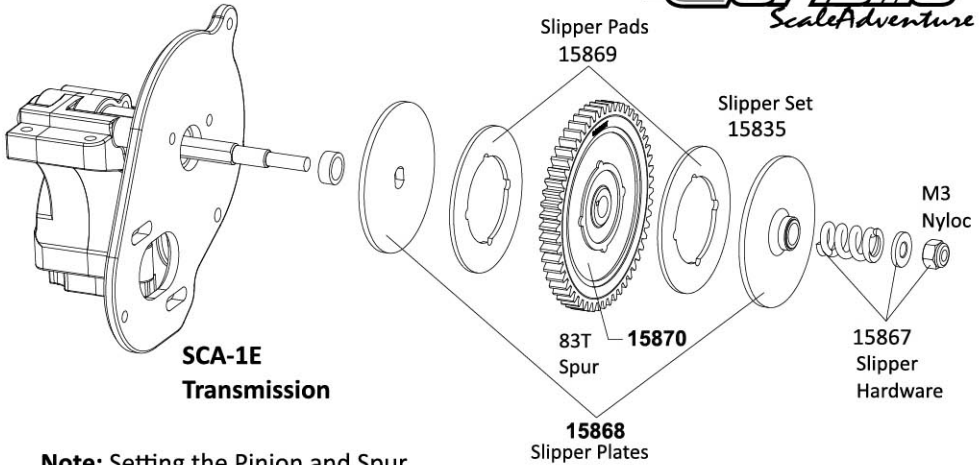
Middle Locked Diff Assembly



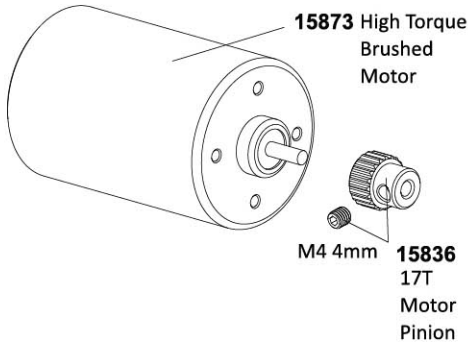
SCA-1E Transmission



15 : 1 Drive Ratio
With Stock 17T Pinion & 83T
Spur = 15.1 Drive Ratio



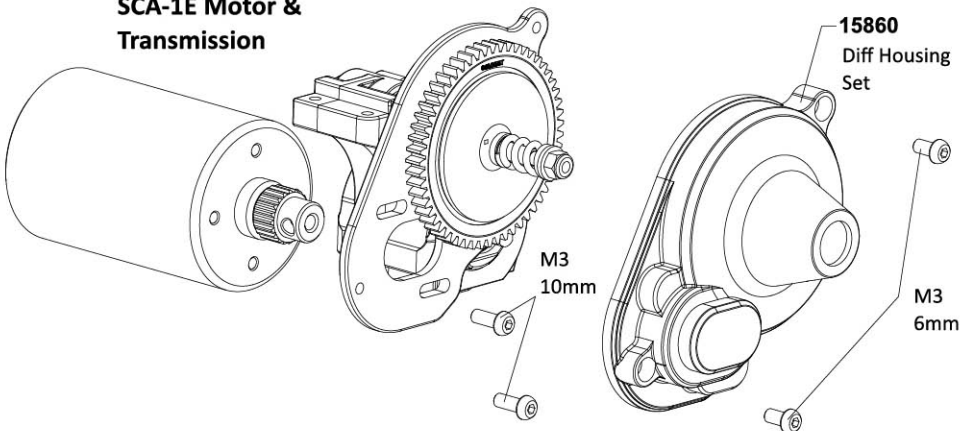
Note: Setting the Pinion and Spur Gear Mesh, and the Slipper Clutch correctly are very important for smooth running and to protect the driveline from damage.

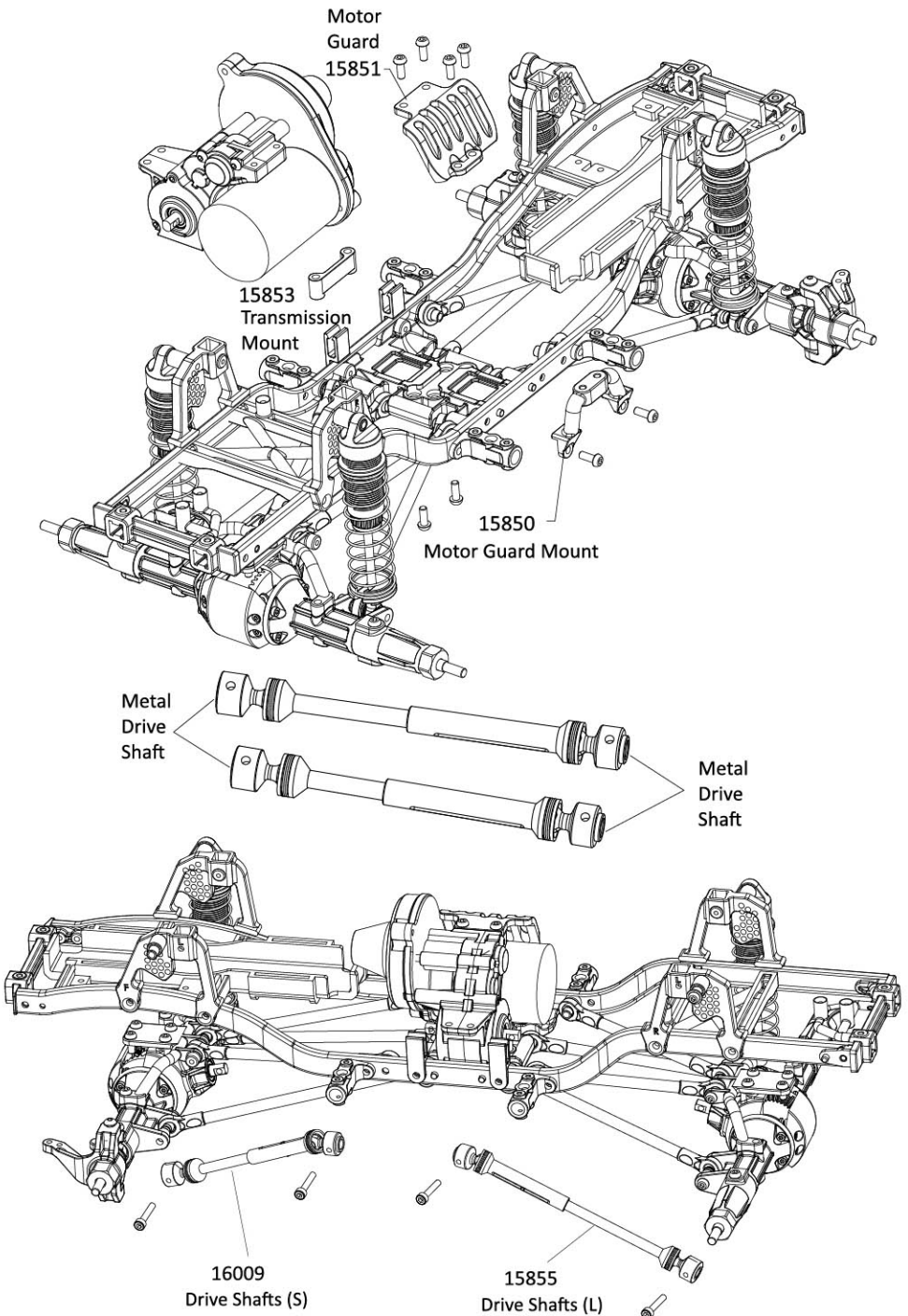


Gear Mesh: Use a thin strip of printer or note paper, and feed this between the Motors Pinion and the Spur. Press together, then tighten up motor bolts. Once paper is then pulled clear, will set the perfect gear mesh.

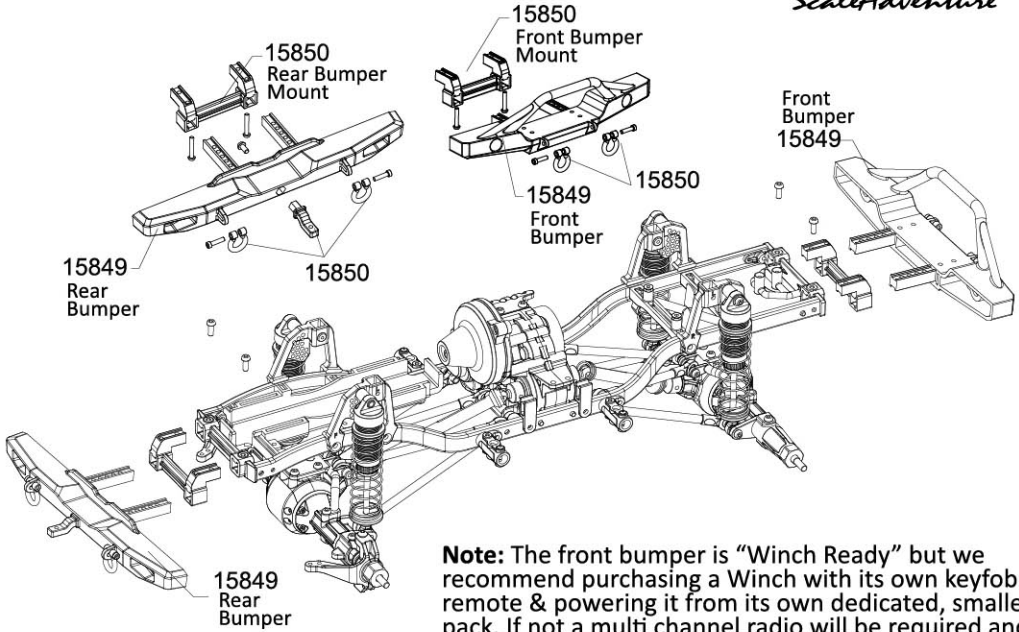
Slipper Clutch: Place the rig on a high grip surface, such as a carpet. The slippers spring should then be compressed all the way in using the M3 Nyloc nut, then backed off approximately 1.5 turns. The slipper should only slip in the event the driveline gets locked up under full load when Crawling.

SCA-1E Motor & Transmission

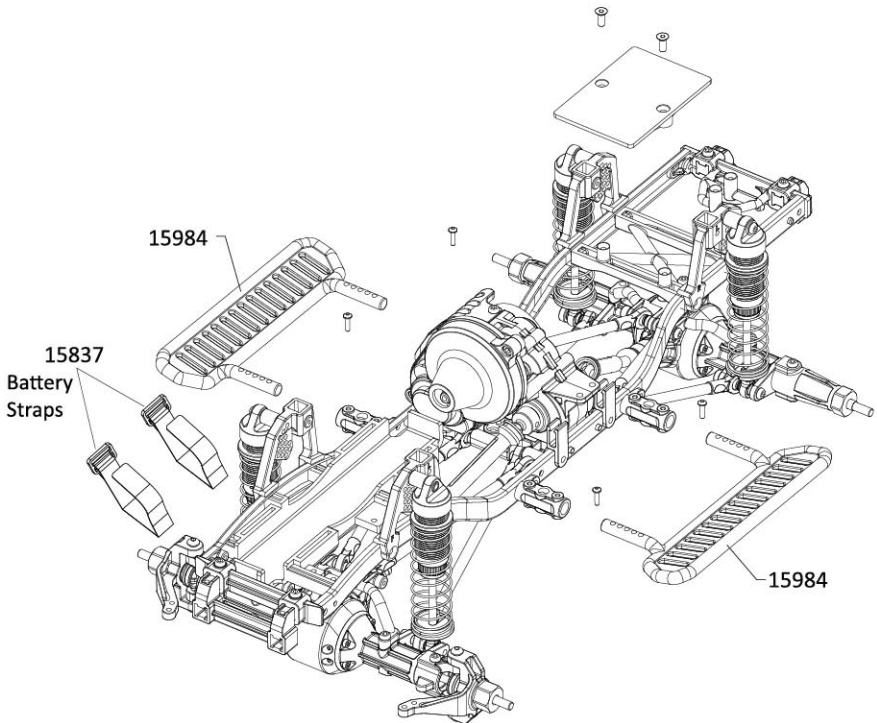




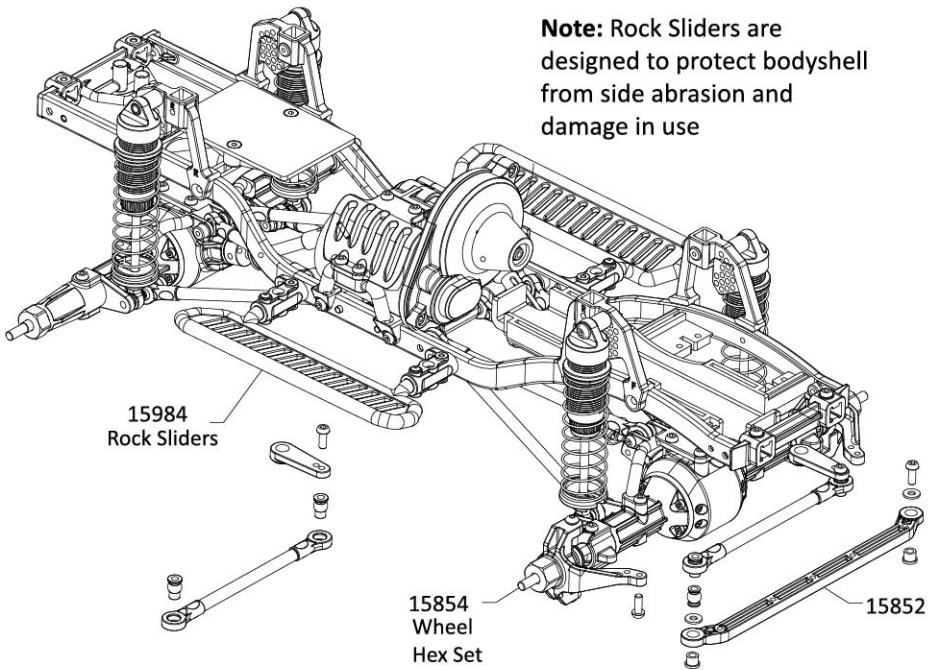
* The Front & Rear Bumper include in the bag



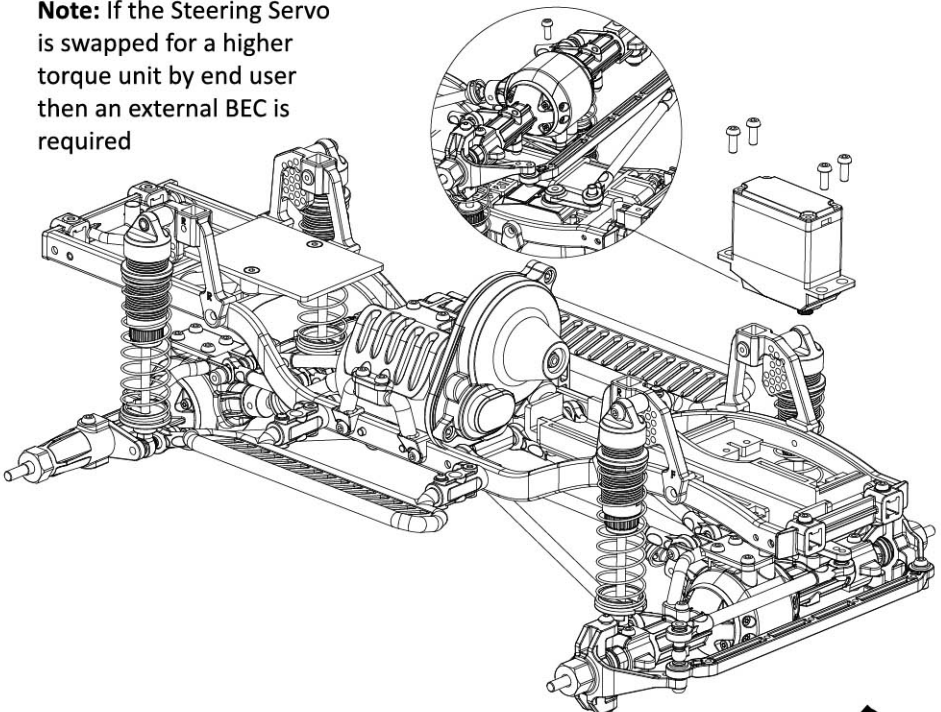
Note: The front bumper is "Winch Ready" but we recommend purchasing a Winch with its own keyfob remote & powering it from its own dedicated, smaller pack. If not a multi channel radio will be required and separate power feed taken from the main pack



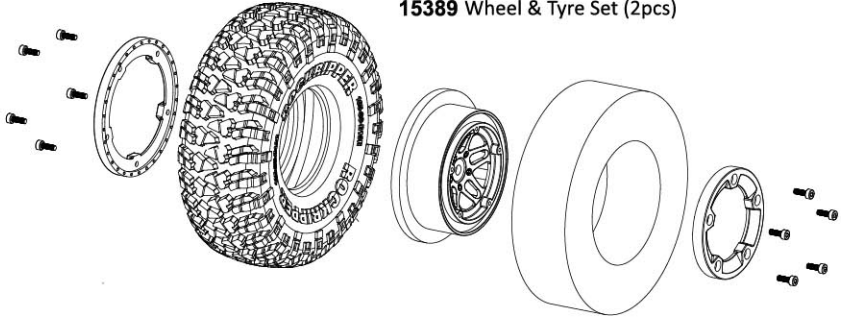
Note: Rock Sliders are designed to protect bodyshell from side abrasion and damage in use



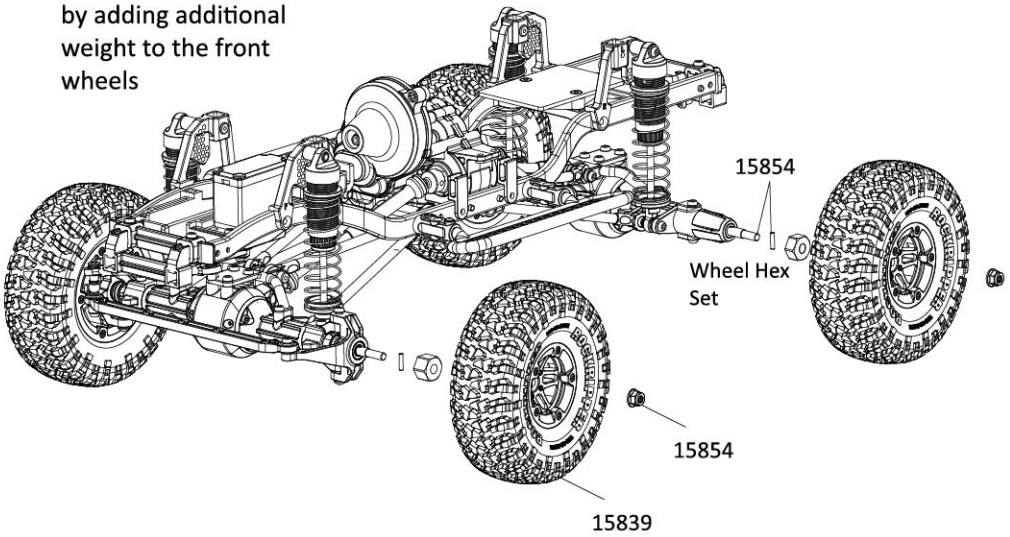
Note: If the Steering Servo is swapped for a higher torque unit by end user then an external BEC is required

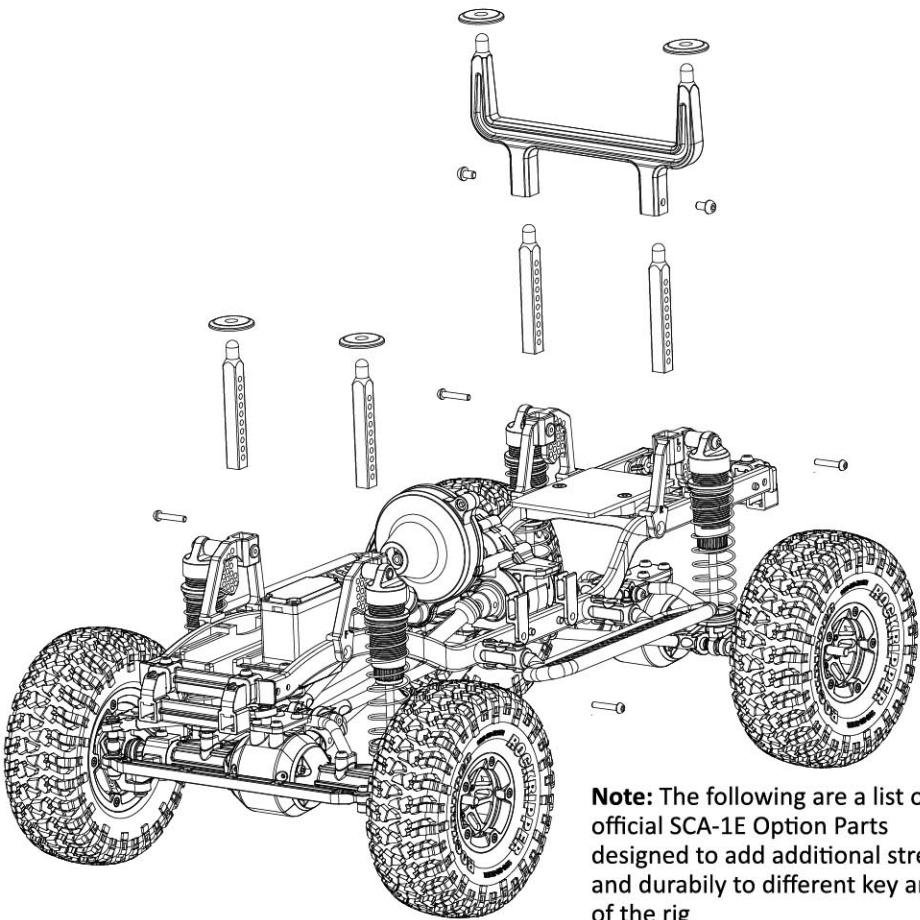


15389 Wheel & Tyre Set (2pcs)



Note: Climbing ability and weight bias can be adjusted by adding additional weight to the front wheels





Note: The following are a list of official SCA-1E Option Parts designed to add additional strength and durability to different key areas of the rig

Option Parts

PART DESCRIPTION

- 15875 SCA-1E Aluminium Rim Set 2pcs
- 15881 SCA-1E Aluminium Servo Arm 25T
- 15882 SCA-1E Aluminium Servo Arm 24T
- 15883 SCA-1E Aluminium Servo Arm 23T
- 15887 SCA-1E Aluminium Wheel Hex 8mm
- 15888 SCA-1E Aluminium Steering Knuckle
- 15889 SCA-1E Aluminium Front Differential Case
- 15890 SCA-1E Aluminium Rear Differential Case
- 15891 SCA-1E Aluminium Steering Linkage

PART DESCRIPTION

- 15894 SCA-1E Aluminium Center Differential
- 15916 LED Light for SCA-1E Chassis
- 15917 SCA-1E Y-Harness
- 15978 SCA-1E Optional Metal Gear Differential
- 15981 CAS 55T High Torque Motor
- 15992 25T Alum Servo Horn (BLK)
- 15993 SCA-1E Stainless Steel Wire Mesh
- 16017 SCA-1E Aluminum Adjustable Oil-Shock Set

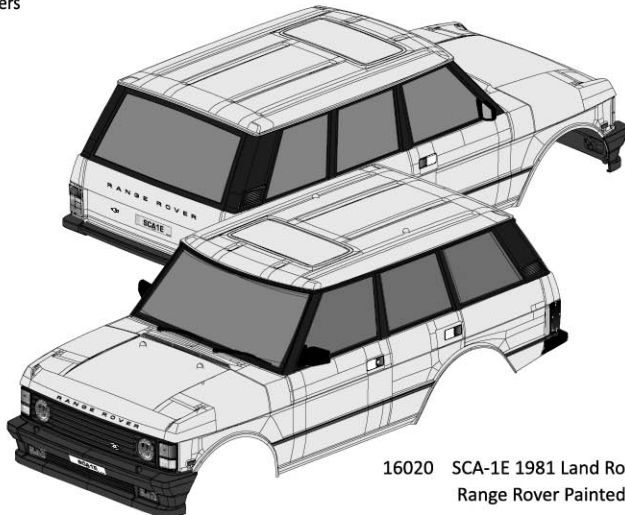
Spare Parts

PART DESCRIPTION

15820	SCA-1E F&r Differential Set
15821	SCA-1E 39t Differential Crown Gear
15822	SCA-1E Differential Locker
15823	SCA-1E Differential Case Set
15824	SCA-1E 16t Differential Input Pinion Gear
15825	SCA-1E Front Cvd Shaft Set
15826	SCA-1E Rear Axle Drive Shaft
15827	SCA-1E Ladder Chassis(285mm)
15828	SCA-1E Oil Shocks Set
15829	SCA-1E Battery Box + Esc Mount Plate
15830	SCA-1E Center Differential Set
15831	SCA-1E Center Differential Case - L
15832	SCA-1E Center Differential Output Shaft
15833	SCA-1E Center Differential Case - R
15834	SCA-1E Differential Pinion Pin 5x14.7
15835	SCA-1E Slipper Set
15836	SCA-1E Motor Pinion Gear 17t
15837	SCA-1E Battery Straps
15839	SCA-1E Wheel & Tire Set 2pcs
15840	SCA-1E F&r Differential Case
15841	SCA-1E F&r Axle Casing Half
15842	SCA-1E Rear Axle Lockout
15843	SCA-1E 4-link Upper Mount
15844	SCA-1E Front Steering C Hub
15845	SCA-1E Front Steering Knuckle
15846	SCA-1E Servo Mount
15847	SCA-1E F&r Bumper Holder + F&r Shocks Ho
15848	SCA-1E F&r Shocks & Chassis Brace
15849	SCA-1E F&r Bumpers Set
15850	SCA-1E 4 Shackles And Bumper Riser
15851	SCA-1E Body Post & Motor Guard
15852	SCA-1E Steering Link
15853	SCA-1E Drag Link & Servo Horn (Fu)
15854	SCA-1E Wheel Hex Set
15855	SCA-1E Drive Shafts(L)
15856	SCA-1E Rock Sliders

PART DESCRIPTION

15857	SCA-1E Bearing & Bushing Set (14pcs 5x10x4, 6pcs 10x15x4)
15858	SCA-1E Center Top Shaft Assembly (13t)
15859	SCA-1E Motor Plate
15860	SCA-1E Center Differential Housing Set
15861	SCA-1E Front Cvd Shaft
15862	SCA-1E Front Cvd Drive Cup
15863	SCA-1E Front Cvd Joint
15864	SCA-1E Center Top Shaft
15865	SCA-1E Top Spur Gear 13t
15866	SCA-1E Differential Idler Gear 19t
15867	SCA-1E Slipper Hardware Set
15868	SCA-1E Slipper Plate Set
15869	SCA-1E Slipper Pads
15870	SCA-1E Spur Gear 83t
15871	SCA-1E Led Light Set For Lynx Wagon
15872	SCA-1E 4-link Skid Plate
15873	SCA-1E Hi Torque Brushed Motor 35t
15914	Arc-1 Brushed Esc
15928	SCA-1E Speed Control
15930	SCA-1E Receiver
15941	Csa 35t High Torque Brushed Motor
15942	SCA-1E Replacement High Torque Servo
15980	SCA-1E Chassis Mounted Servo And
15982	SCA-1E F & R V2 Shock & Body Post Mount
15983	SCA-1E F & R Bumper Mount Set
15984	SCA-1E V2 Narrow Type Rock Slider Pr
15986	SCA-1E All Terrain Adventure
16009	SCA-1E Drive Shaft (S)
16019	SCA-1E Drive Shaft Pin Set
16020	SCA-1E 1981 Land Rover Range Rover Painted Body Set
16021	SCA-1E 1981 Land Rover Range Rover Clear Body Set
16022	SCA-1E 1981 Land Rover Range Rover Parts Set
16023	SCA-1E 1981 Land Rover Range Rover Decal Sheet
16024	SCA-1E Differential Tube Spacer (Pr)



16020 SCA-1E 1981 Land Rover
Range Rover Painted Body Set

CE Compliance Information For The European Union

Carisma hereby declares that this product is in compliance with the essential requirements and other relevant provisions of the RED Directive 2014/53/EU, EN 301 489-1 V2.1.1, EN 301 489-17 V3.1.1, ETSI EN 300 328 V2.1.1

The associated regulatory agencies of the following countries recognize the noted certifications for this product as authorized for sale and use.

UK	DE	DK	BG	SE	CZ	ES	NL	SK	HU	RO	FR	PT
FI	EE	LV	LT	PL	AT	CY	SI	GR	MT	IT	IE	LU

Products: Carisma CTX-8000 2.4GHz Transmitter, ARC-1 ESC, MRX-2800 Receiver
Equipment Class: 2

FCC Information
FCC ID YDCTCX-8000JP
Item Name : Carisma CTX-8000 2.4GHz Transmitter

The objects of declaration described above are in conformity with the requirements of the specifications listed below.

Manufactured By : Mun Ah Plastic Electronic Toys Company, Ltd

Statement - This device complies with Part 15 of the FCC Rules.

Operation is subject to the following two conditions:

(1) this device may not cause harmful interference, and

(2) this device must accept any interference received, including interference that may cause undesired operation.

Changes or modifications not expressly approved by the party responsible for compliance could void the user's authority to operate the equipment.

RF Exposure Warning:

This equipment complies with FCC radiation exposure limits set forth for an uncontrolled environment.

And should be operated with minimum distance of 20 cm between the antenna & your body.

Instructions for Disposal of WEEE by Users in the European Union

This product must not be disposed of with other waste. Instead, it is the user's responsibility to dispose of their waste equipment by handing it over to a designated collection point for the recycling of waste electrical and electronic equipment. The separate collection and recycling of your waste equipment at the time of disposal will help to conserve natural resources and ensure that it is recycled in a manner that protects human health and the environment. For more information about where you can drop off your waste equipment for recycling, please contact your local city office, your household waste disposal service or where you purchased the product.

FCC Information

This equipment has been tested and found to comply with the limits for a Class B digital device, pursuant to part 15 of the FCC Rules. These limits are designed to provide residential protection against harmful interference in a residential installation. This equipment generates, uses, and can radiate radio frequency energy and, if not installed and used in accordance with the instructions, may cause harmful interference to radio communications. However, there is no guarantee that interference will not occur in a particular installation. If this equipment does cause harmful interference to radio or television reception, which can be determined by turning the equipment on and off, the user is encouraged to correct the interference by one or more of the following measures: Reorient or relocate the receiving antenna. Increase the separation between the equipment and the receiver. Connect the equipment into an outlet on a circuit different from that to which the receiver is connected.

FCC Warning:

The equipment may generate or use radio frequency energy. Changes or modifications to this equipment may cause harmful interference unless the modifications are expressly approved in the instruction manual. Modifications not authorized by the manufacturer may void the user's authority to operate this device. This device complies with part 15 of the FCC Rules. Operation is subject to the following two conditions (1) This device may not cause harmful interference, and (2) this device must accept any interference received, including interference that may cause undesired operation.

Limited Warranty

Warranty Period: Carisma R/C warrants that the SCA-1E ("Product") will be free from original factory defects in materials and workmanship upon purchase ("Warranty Period"). **What is Not Covered** - This warranty is not transferable and does not cover (a) cosmetic damage, (b) damage due to acts of God, accident, misuse, abuse, negligence, commercial use, or due to improper use, installation, operation or maintenance, (c) modification to any part of the Product, (d) attempted service by anyone other than a Carisma R/C authorized service center, or (e) Product not purchased from an authorized Carisma RC dealer. **OTHER THAN THE EXPRESS WARRANTY ABOVE, CARISMA RC MAKES NO OTHER WARRANTY OR REPRESENTATION, AND THEREFORE DISCLAIMS ANY AND ALL IMPLIED WARRANTIES, INCLUDING, WITHOUT LIMITATION, THE IMPLIED WARRANTIES OF NON-INFRINGEMENT, MERCHANTABILITY AND SUITABILITY FOR A PARTICULAR PURPOSE. THE PURCHASER ACKNOWLEDGES THAT THEY ALONE HAVE DETERMINED THAT THE PRODUCT WILL MEET THE REQUIREMENTS OF THEIR INTENDED USE.**

Purchaser's Remedy - Carisma RC's sole obligation and purchaser's sole and exclusive remedy shall be that Carisma RC will, at its option, either (a) service, or (b) replace, any Product determined by Carisma RC to be defective. Carisma RC reserves the right to inspect any and all Product(s) involved in a warranty claim. Service or replacement decisions are at the sole discretion of Carisma RC. Proof of purchase is required for all warranty claims. **SERVICE OR REPLACEMENT AS PROVIDED UNDER THIS WARRANTY IS THE PURCHASER'S SOLE AND EXCLUSIVE REMEDY.**

Limitation of Liability

CARISMA RC SHALL NOT BE LIABLE FOR SPECIAL, INDIRECT, INCIDENTAL OR CONSEQUENTIAL DAMAGES, LOSS OF PROFITS OR PRODUCTION OR COMMERCIAL LOSS IN ANY WAY, REGARDLESS OF WHETHER SUCH CLAIM IS BASED IN CONTRACT, WARRANTY, TORT, NEGLIGENCE, STRICT LIABILITY OR ANY OTHER THEORY OF LIABILITY, EVEN IF CARISMA RC HAS BEEN ADVISED OF THE POSSIBILITY OF SUCH DAMAGES.

Further, in no event shall the liability of Carisma RC exceed the individual price of the Product on which liability is asserted. As Carisma RC has no control over use, setup, final assembly, modification or misuse, no liability shall be assumed nor accepted for any resulting damage or injury. By the act of use, setup or assembly, the user accepts all resulting liability. If you see the purchaser or user are not prepared to accept the liability associated with the use of the Product, purchaser is advised to return the Product immediately in new and unused condition to the place of purchase. This warranty gives you specific legal rights, and you may also have other rights which vary from country to country, or state to state. Carisma RC reserves the right to change or modify this warranty at any time without notice.

MUN AH PLASTIC ELECTRONIC TOYS CO., LTD.

21/G , Kingsway Industrial Building,
Phase 2, 173 - 175 Wo Yi Hop Road,
Kwai Chung, N.T., Hong Kong.

Note: For official Carisma RC spare parts, see your local hobby shop or place of purchase first. If unavailable, parts can be ordered direct at: <http://www.carisma-shop.com>

SCA-1E Setup Notes



Shocks, Oil Weight & Springs:

Weight Bias:

Motor Pinion & Spur Gear:

Slipper Clutch & Motor Wind:

Other Setup Options Used:

"Owning a Range Rover is just the start, where it takes you is the real adventure..."

Ivan Carisma